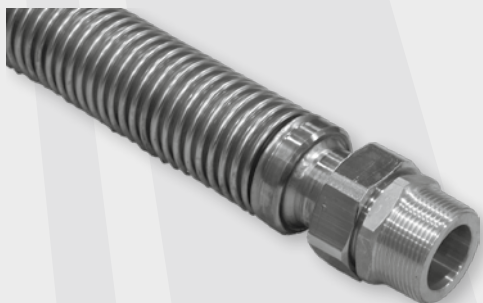


# FS/1R + FS/2R ACCESSORIES

## PVS CORRUGATED CONNECTION PIPE



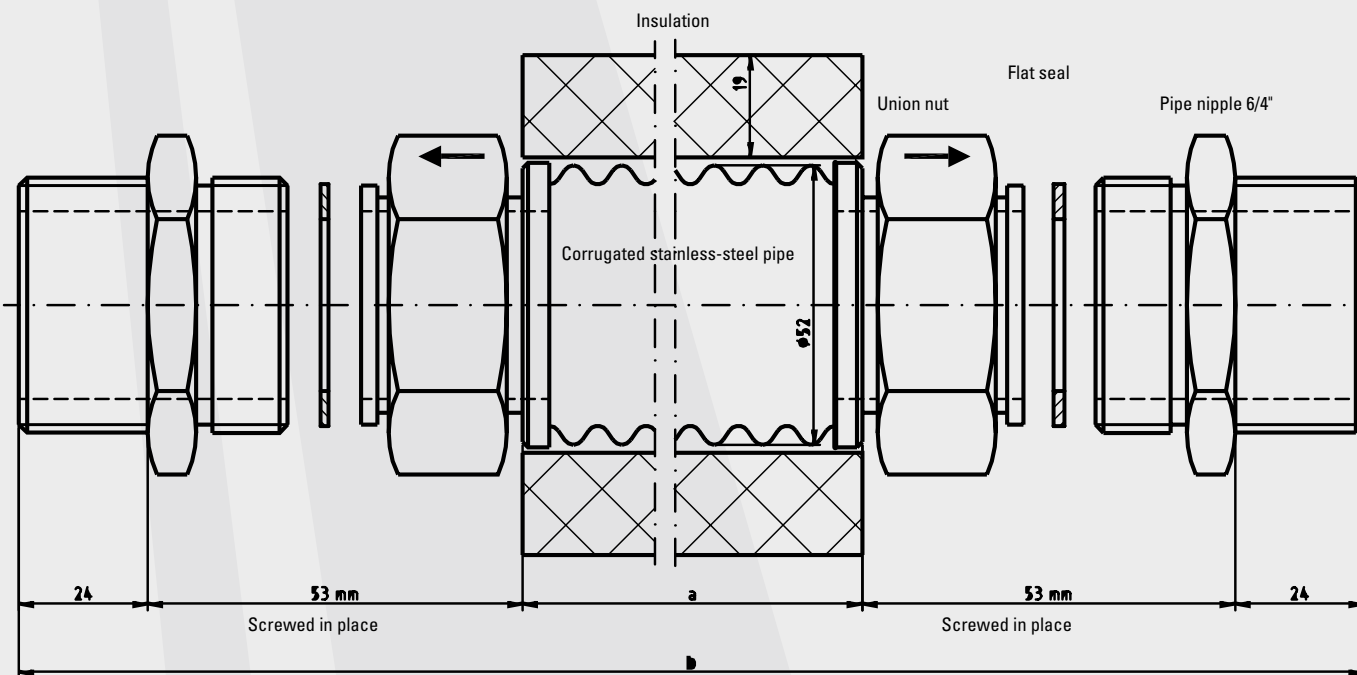
### Corrugated connection pipe

The corrugated pipe connects 2 FS and/or PSN tanks and may only be installed in a horizontal position with no sagging (avoid thermosiphon action)!

Guide plates are included in the scope of delivery. The pipe nipples should be sealed properly with hemp and sealing compound! Including 19 mm rubber insulation.

### Specifications

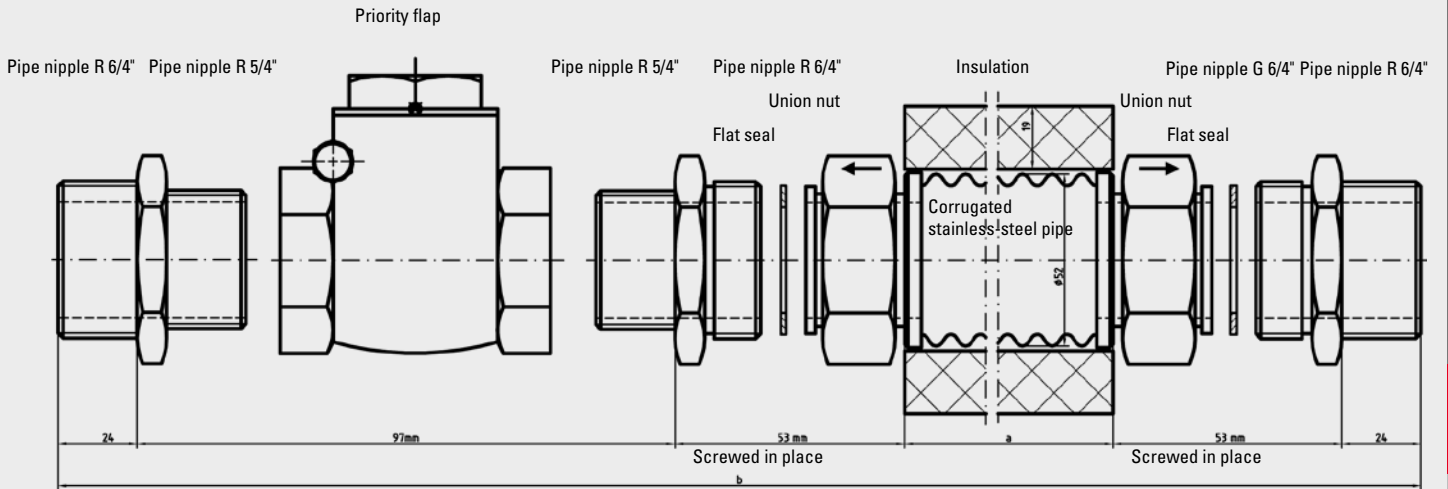
Corrugated pipe	Stainless steel 1.4404, DN 40, wall thickness 0.5 mm
Union nut	Nickel-plated brass, stainless steel neck, spanner size 56
Flat seal	Klingerit
Pipe nipple	Brass, spanner size 50, G 1½" with R 1½"



Application	up to FS 1000 S
Item no.	1620027
Dimension a	approx. 846 mm
Type	PVS-L
Dimension b	1,000 mm

# FS/1R + FS/2R ACCESSORIES

**PVS CORRUGATED CONNECTION PIPE**



<b>Application</b>	<b>up to FS 1000 S</b>
<b>Item no.</b>	<b>1620026</b>
<b>Type</b>	<b>PVS-K-VK</b>
<b>Dimension a</b>	approx. 773 mm
<b>Dimension b</b>	1,000 mm